





DRACO 3400 ZIRCON

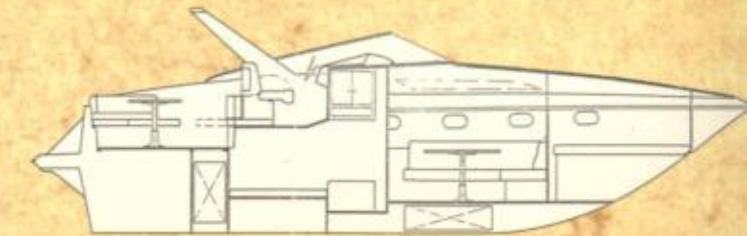
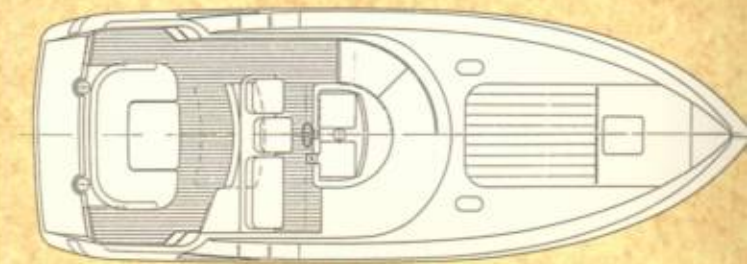
This latest newcomer to our range for the Nineteen Nineties is a six berth express family sports cruiser that is capable of speeds in excess of 40 KNOTS.

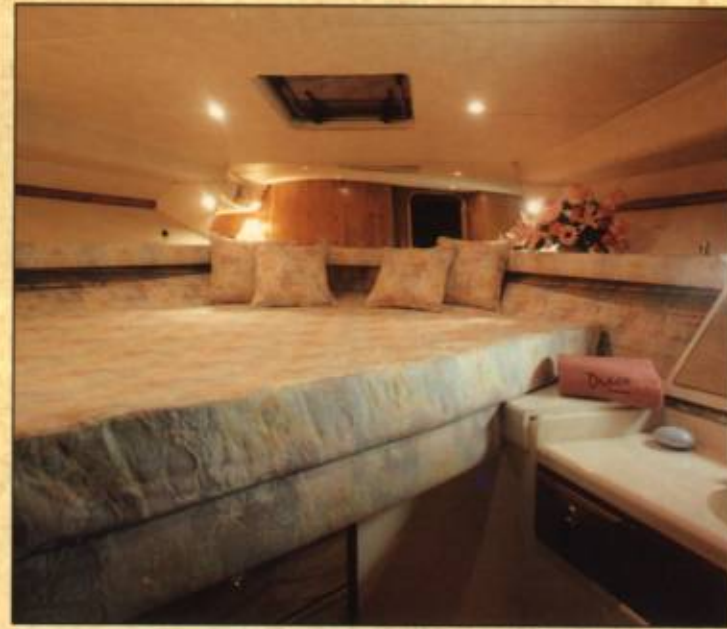
The beamy but sleek hull provides three luxurious cabins, the owner's in the bow has a vanity unit, wardrobe and ample drawer space. A beautifully fitted spacious main saloon creates a feeling of opulence and tranquillity which is complemented by the well equipped and functional galley. The guest

aft cabin boasts large twin berths and a full length hanging wardrobe.

The exceptionally large Cockpit is full of new innovations, including, twin entrance doors from the swimming platform, superb sunbed for four or alfresco dining for up to eight, Cockpit fridge, folding targa arch, and a concealed lockable re-fueling compartment.

A desirable new design that you will be proud to own!





Zircon



STANDARD EQUIPMENT AND SPECIFICATION

DIMENSIONS

LOA	10,55 m	(34 ft 6 in)
Beam	3,85 m	(12 ft 6 in)
Height overall	3,70 m	(12 ft 1 in)
Draft	0,90 m	(3 ft)
Weight w/twin AD41Dp	5500 kgs	(12220 lbs)
Deadrise	20°	
Fuel capacity	650-700 L	(145-156 imp. Gallon)
Water capacity	210 L	(47 imp. Gallon)
Sleeps	6-8	

HULL AND CONSTRUCTION

Designed by Hans J. Johnsen. Deep "V", 20° deadrise aft. 2 full length moulded spray deflectors. NGA gelcoat against osmosis. Glassfibre laid up by hand and sprayed with unidirectional rovings. Transverse and longitudinal strengthening stringers throughout hull with high density Inotan. Hull/deck joint bolted and bonded.

DECK

Stainless steel stemhead roller. Twin bow, spring and stern cleats. 2 line stainless steel pulpit. Full set of navigation lights. Covered water filler. Concealed fuel filling compartment. Moulded non-slip deck surface. Bathing platform with concealed transom ladder. Transom fender stowage.

HELM POSITION

Two single and one double helm seats. Curved panoramic windshield in clear safetyglass. Power steering. Twin single-lever throttle and gear controls. Stern drive trim controls. Trim tab controls with indicators. Full engine instrumentation including tachometers, oil pressure gauges, temperature gauges and battery condition indicators. High speed compass with light. Autohelm tridata instr. with echosounder, speedometer and distance log. Remote control for anchor winch. Chart table. Lockable glove compartment, and chart stowage. Fuel contents gauge. Domestic water contents gauge. Engine hour meters. Circuit breaker switches for navigation and panel lights, bilge pump and engine room extractor fan. Anchor windlass. Co-pilot grab rail. Burr walnut laminate instrument panel adjustable steering wheel.

COCKPIT

Self-draining. U-shaped cushioned seating, converting to 1,9 m x 1,9 m double sunbed. Cockpit dining table. Cockpit refrigerator. Stowage lockers under U-sofa. Extra side panel lockers. Folding GRP arch with cockpit light under. Moulded non-slip floor surface. Double emergency bilge pumps. Port and starboard entrance doors from swimming platform.

INTERIOR FURNISHINGS

Choice of co-ordinating carpets, upholstery and curtain fabrics. Joinery and woodwork in Teak.

SALOON

Headroom 1,85 m. L shaped dinette, converting to 2,1 m x 1,2 m double berth. Dining table. Stowage lockers under dinette seating. Cave lockers and storage shelving. Large floor stowage compartment. Opening portholes. Ceiling and reading lights. Control panel for 12/240v with electrical circuits. T.V. Recess with socket and plug. Ceiling opening hatch.

GALLEY

Three burner gas hob or 2 plate Wallas stove with top cover, plus oven. 60 L refrigerator with automatic 12v/240v changeover. Twin sinks with hot and cold mixer tap. Full sliding and folding cover. Ceiling opening hatch. Microwave oven.

FORWARD CABIN

2,1 m x 1,4 m (max) double berth. Wardrobe. Add stowage under berth. 4 Drawer set not rack. 4 ceiling lights. Escape hatch to forward deck. Twin opening portholes. Mirror. TV-shelf w/plug. 2 reading lights. Vanity unit with drawer, illuminated mirror, and hot and cold mixer taps.

AFT CABIN

2,1 m x 1,4 m double berth. Full length wardrobe. Shelf. Ceiling and reading lights. Opening porthole. 2 opening windows to cockpit. Direct entrance to toilet room.

SHOWER AND TOILET COMPARTMENT

Shower with hot and cold water. Shower rail and curtain. Automatic shower tray pumpout system. WC, with seacocks to outlet and inlet. Hand basin with hot and cold water, 240v shaving point. Halogen ceiling lights. Opening porthole. Towel and toilet paper holders. Toothbrush and glass holder. Hooks. Add: Cabinet with Mirror Door. Add: Eye level lockers.

ELECTRICAL SYSTEMS

All 240 volt and 12 volt circuits protected by breakers on main electrical load control panel in saloon.

12 VOLT

2 x 105 a.h. batteries wired in parallel supplying domestic services and engine starting. 1 x 105 a.h. battery exclusively for starboard engine starting. (Domestic batteries accept charge from both engines. Emergency battery coupling system permits starboard engine battery to start port engine if domestic batteries accidentally discharged.)

240 VOLT

240v shorepower supply. Socket outlets in saloon, galley and cabins. Wiring diagram provided in handbook. Battery charger.

ENGINES

GRP engine access hatch with pneumatic support struts. Engine room soundproofing. Electric engine room extractor fan. Aerodynamically designed engine air intakes. Engine room fire extinguishers. Electric bilge pump. Engine manufacturer's handbook and tools.

FUEL SYSTEM

2 x 350 L (diesel) or 1 x 650-700 l (gasoline) marine grade alloy fuel tanks. On/off control accessible through cockpit locker. Fuel tank isolated between full height bulkheads. Lockable, concealed fuel filler and vent pipes. Copper fuel lines. High capacity water separators and filters on diesel installations.

FRESHWATER SYSTEM

200 l water tank under front berth. 30 l warm water tank. 240v shorepower immersion heater. Automatic, pumped pressurised supply.

GAS

All gas burners fitted with flame failure protection devices. Gas bottle stowage in self-venting cockpit locker. Copper, supply pipe. Single tail feed with regulator.

STANDARD FEATURES

Reversible 700 watt electric anchor winch. Electro-hydraulic trim tabs. Echo sounder with audible shallow water alarm. Stereo radio/cassette player with saloon and cockpit speakers. Add: Multi Directional TV Aerial. Hot and cold water transom shower. Cockpit and galley refrigerators. 2 part cockpit hood on stainless steel frame. Selfstowing anchor 40 m chain. 6 fenders. Horn. 2 x 10 m mooring warps. Logbook. First Aid Kit.

PERFORMANCE ESTIMATES

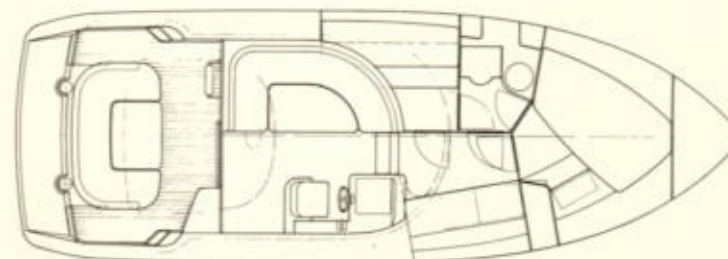
Diesel:
2 x Volvo AD 41/DP 200 hp: 34-36 knots

Petrol:
2 x Volvo 570/DP 275 hp: 36-40 knots

2 x Volvo 740/DP 330 hp: 40 knots plus

Performance estimates are not guaranteed, but are for guidance use only. Speed result may vary on some boats depending on such factors as weather, the conditions of propellers, boat weight and boat bottom. This specification may be changed at any time without notice.

3400 ZIRCON FB



THE COMING NEW INNOVATION 1991.

THIS SUPERB THREE CABIN EXPRESS FLYBRIDGE CRUISER IS THE NEXT EXCITING ADDITION TO THE DRACO RANGE FOR THE NINETEEN NINETIES, IT WILL BE AVAILABLE WITH SHAFT OR STERN DRIVES.

AGENT/DEALER

DRACO AS

P.O. Box 114, N-4401 Flekkefjord, Norway - Tel 47-43-23155
Fax 47-43-24667 - Telex 21693